

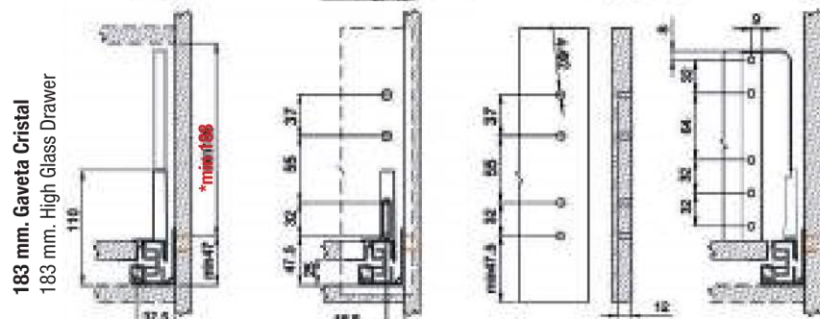
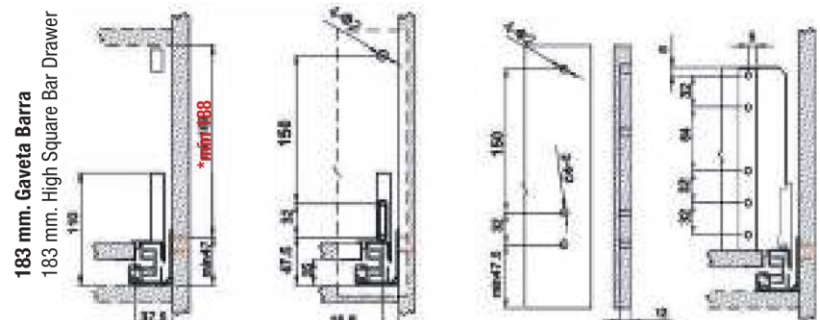
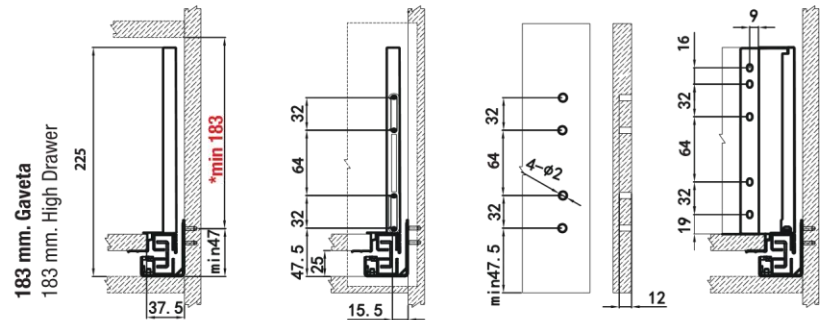
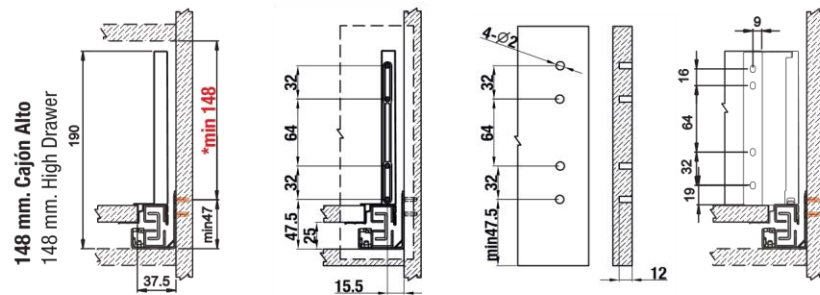
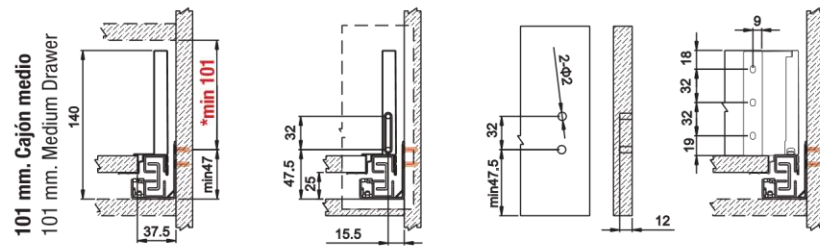
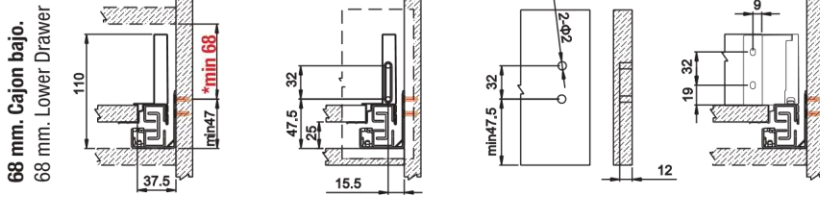
# ADVANCED

EVOLUTION



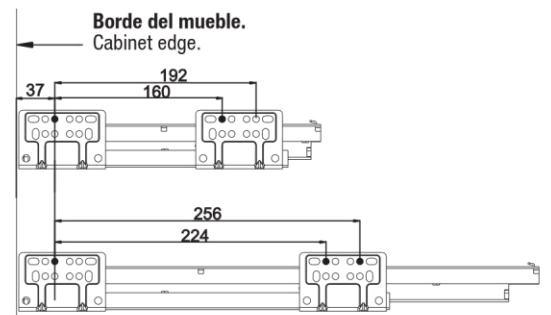
## Dimensiones de instalación. Installation dimension.

\* Para cualquier tipología de instalación hay que respetar las medidas mínimas marcadas en rojo.  
 \* For any type of installation, the minimum measures marked in red must be respected.



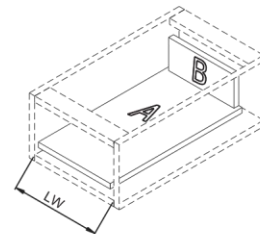
## Características del producto. Feature of the product.

- Cajón de freno doble pared, de excelente calidad, equipado con guía de extracción total de 35 Kg. de carga dinámica y una óptima sonoridad y deslizamiento.
- Cuenta con regulaciones interiores automáticas por excéntrica y un rápido e intuitivo sistema de montaje. Clip de fijación que evita desmontajes accidentales.
- Double wall brake box, excellent quality, equipped with a total extraction guide of 35 Kg. of dynamic load and an optimal sonority and sliding.
- It has automatic internal eccentric regulations and a quick and intuitive mounting system. Fixing clip that prevents accidental disassembly.



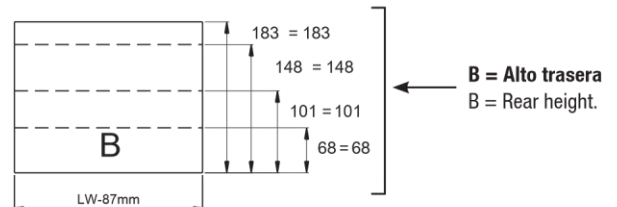
Colocación de tornillos en la guía. Screw placement in the guide.

Panel inferior y posterior de 16 mm. de grueso.  
 Bottom and back panel measure 16 mm. density panel.



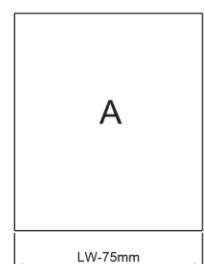
LW = Medida interior del mueble.  
 LW = Internal cabinet width.

B = Ancho trasera = LW - 87 +/- 0.5  
 B = Back width. = LW - 87 +/- 0.5



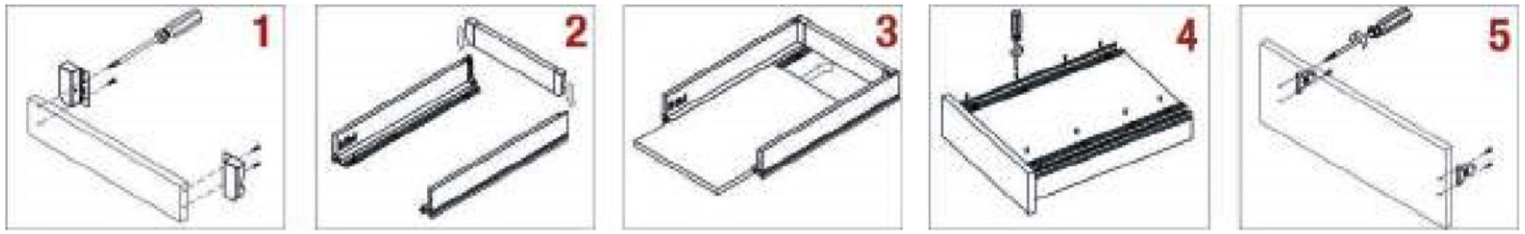
B = Alto trasera  
 B = Rear height.

A = Fondo Base = Longitud nominal de la guía - 8 +/- 0.5  
 A = Base Fund. = Nominal length of the guide - 8 +/- 0.5

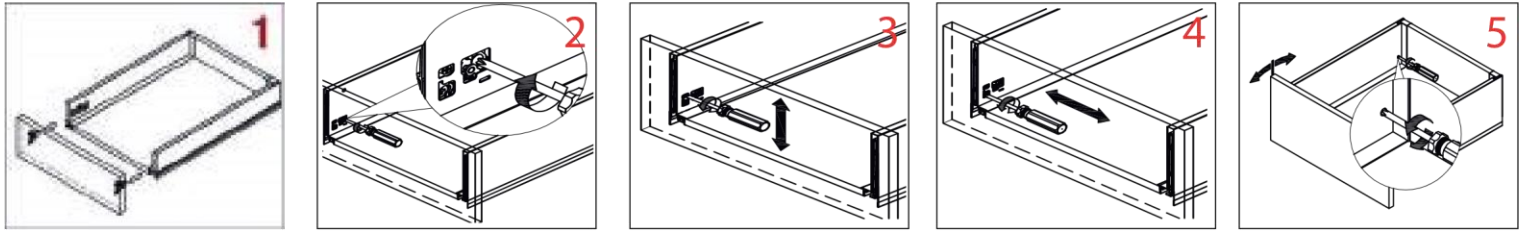


A = Ancho Base = LW - 75 +/- 0.5  
 A = Base Width. = LW - 75 +/- 0.5

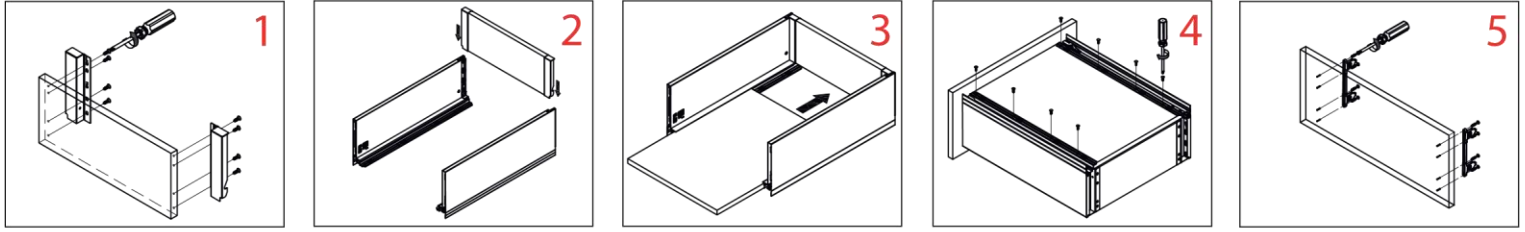
**Montaje del cajón H87 / H117. Assembly of the drawer H87 / H117.**



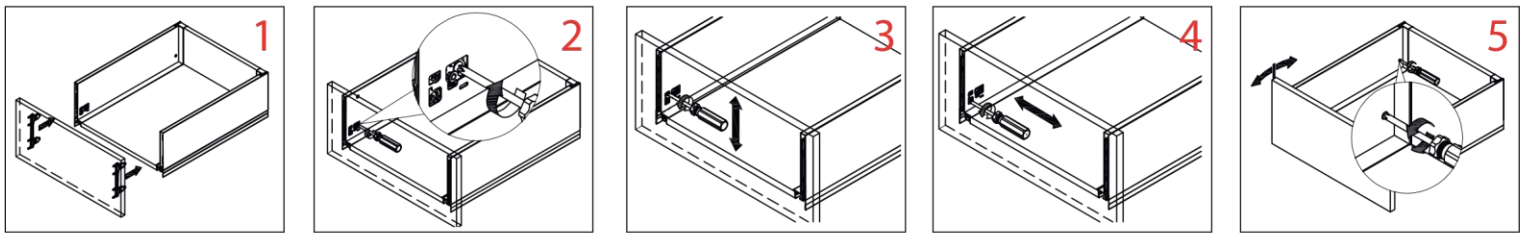
**Ajuste del frente H87 / H117. Adjusting the front H87 / H117.**



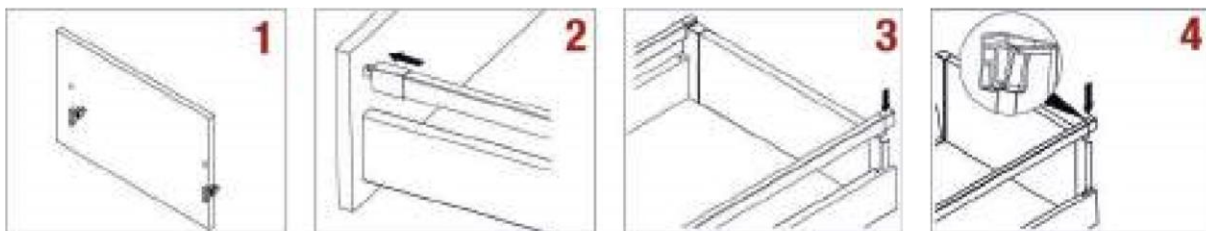
**Montaje del cajón H167. Assembly of the drawer H167.**



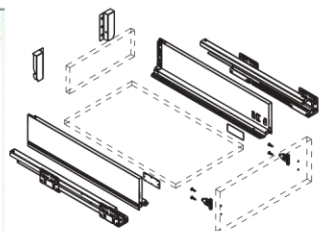
**Ajuste del frente H167. Adjusting the front H167.**



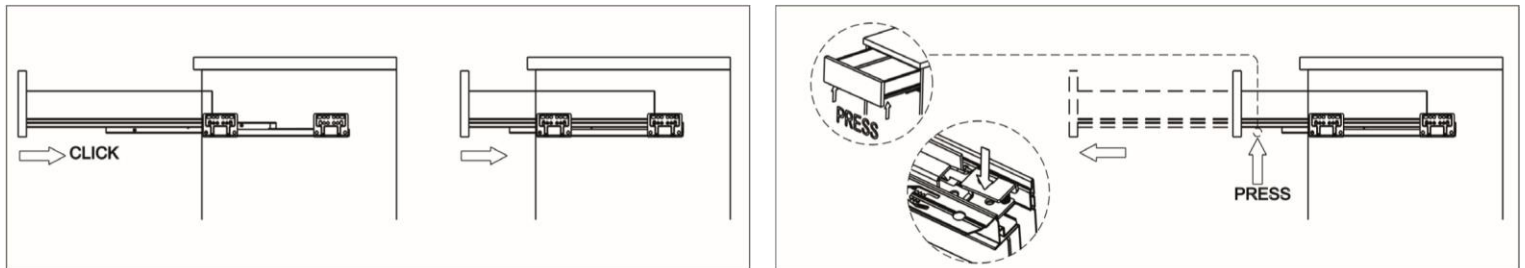
**Montaje del cajón H87 + Barras. Assembly of the drawer H87 + Bars.**



**Croquis despiece.**



**Montaje y desmontaje del cajón. Assembly and disassembly of the drawer.**



**WARNING**

MUY IMPORTANTE EL TORNILLO DE BLOQUEO HABRÁ QUE LIBERARLO ANTES DE INICIAR LA REGULACIÓN DEL FRENTE Y VOLVER A BLOQUEARLO UNA VEZ FINALIZADA LA REGULACIÓN.  
 VERY IMPORTANT THE LOCKING SCREW IS TO BE RELEASED BEFORE STARTING THE FRONT REGULATION AND BLOCKING IT ONCE THE REGULATION IS FINISHED.

**WARNING**

Desbloqueo frente  
Unlocking the front

Regulación altura  
Height adjustment

Regulación abatimiento del frente  
Front abatement regulation

Regulación lateral  
Lateral adjustment