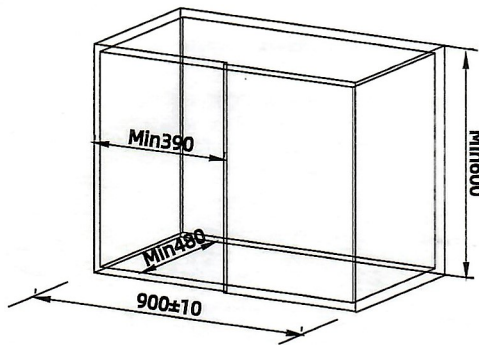


Corner Roll-out Unit Installation Instructions

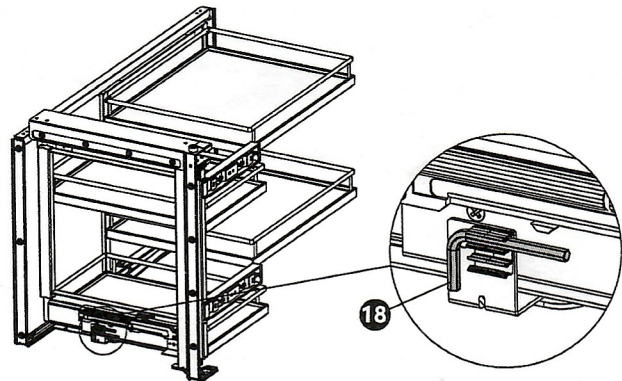
These instructions apply to the following products, with the left opening as an example, the right opening version is the opposite of the left opening version

Open method	Cabinet size	Product size
left opening	900mm	(858-890)x480x560mm
right opening	900mm	(858-890)x480x560mm

Tip: Before installation, please check whether the cabinet is compatible with the product you have acquired



Tip: After installation, the L-shaped spanner can snap back into the back of the frame for standby (as shown below).



Accessory list

- | | | | | | | |
|--|--|--|--|--|--|---|
| 1 Self-tapping screw ST4x16

x30 | 2 Top rail

x1 | 3 Bottom rail

x1 | 4 Back sliding frame

x1 | 5 U-shaped bracket

x2 | 6 Side frame component

x1 | 7 Notch cover cap

x1 |
| 8 Door fixing-bracket cover cap

x2 | 9 Bottom rotating part

x1 | 10 U-shaped door fixing-bracket

x2 | 11 Flat head socket cap screw M6x35

x1 | 12 Bow-shaped door fixing-bracket

x2 | 13 Flat head socket cap screw M6x25

x4 | 14 Cross recessed pan head screws M5x6

x2 |
| 15 Large basket
Optional

x2 | 16 Small basket
Optional

x2 | 17 Mounting template

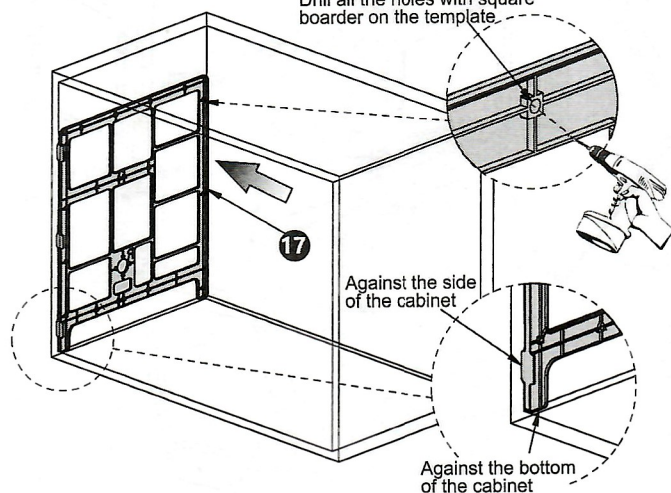
x1 | 18 Hex key

x1 | | | |

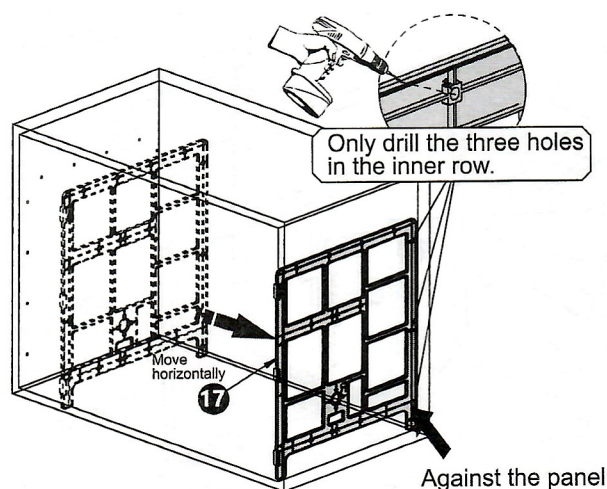
Step 1: Drill with mounting template

1.1 As shown in the figure, pre-drill holes of $\Phi 2.5\text{mm}$ in the side panel with the mounting template.

Drill all the holes with square boarder on the template.

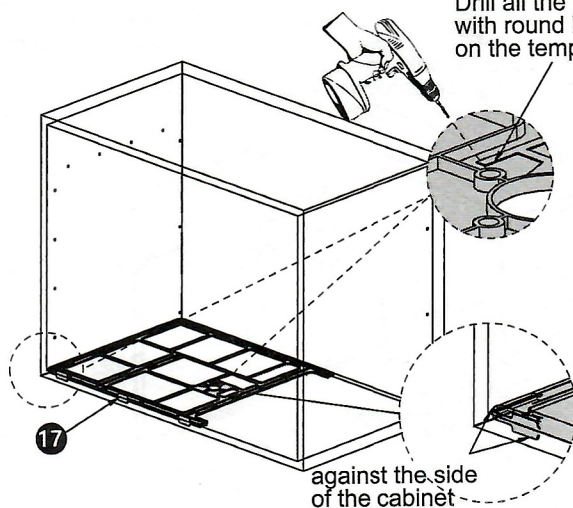


1.2 As shown in the figure, after drilling the holes on one side panel, move the template to the other side panel and only drill the innermost three holes with square boarder.



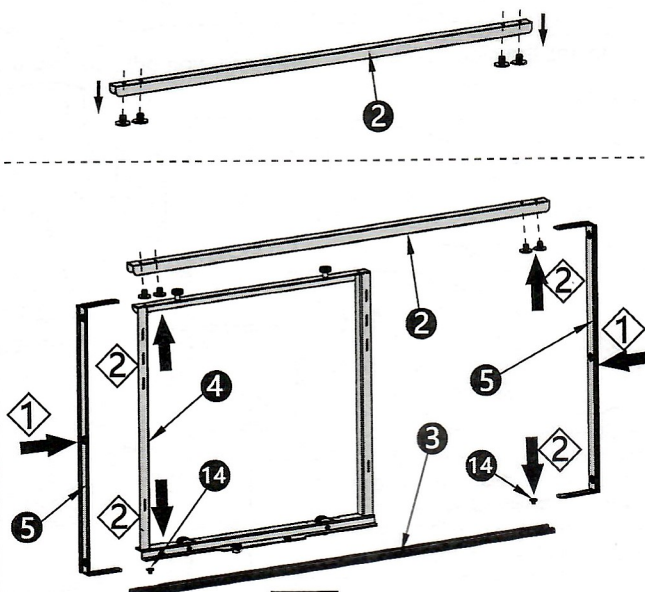
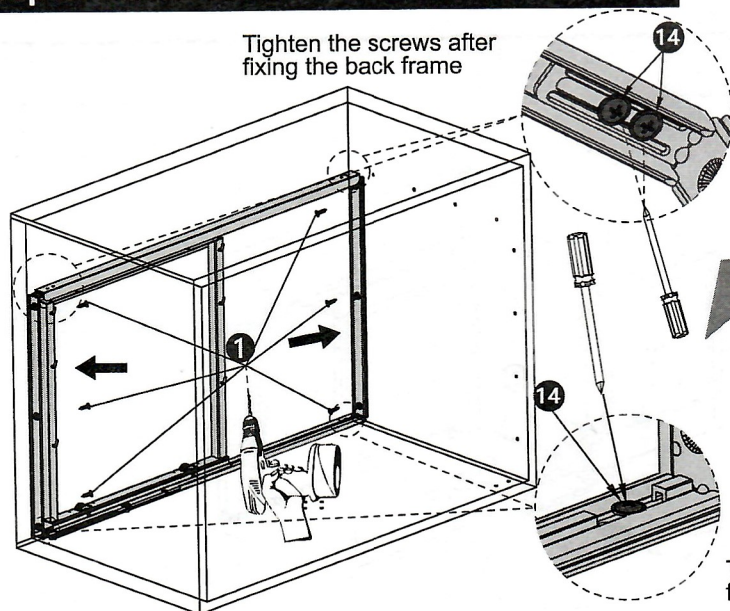
1.3 As shown in the figure, pre-drill holes of $\Phi 2.5\text{mm}$ in the bottom panels with the mounting template.

Drill all the holes with round boarder on the template

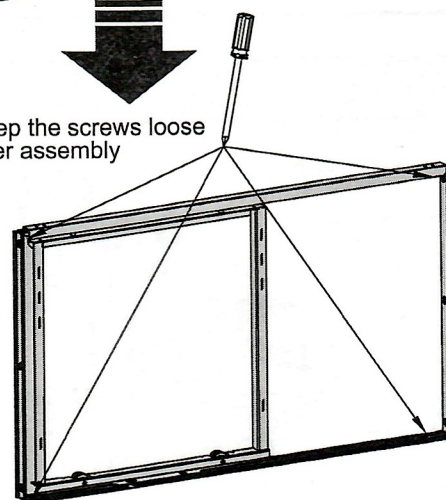


Step 2: Install the back frame

Tighten the screws after fixing the back frame



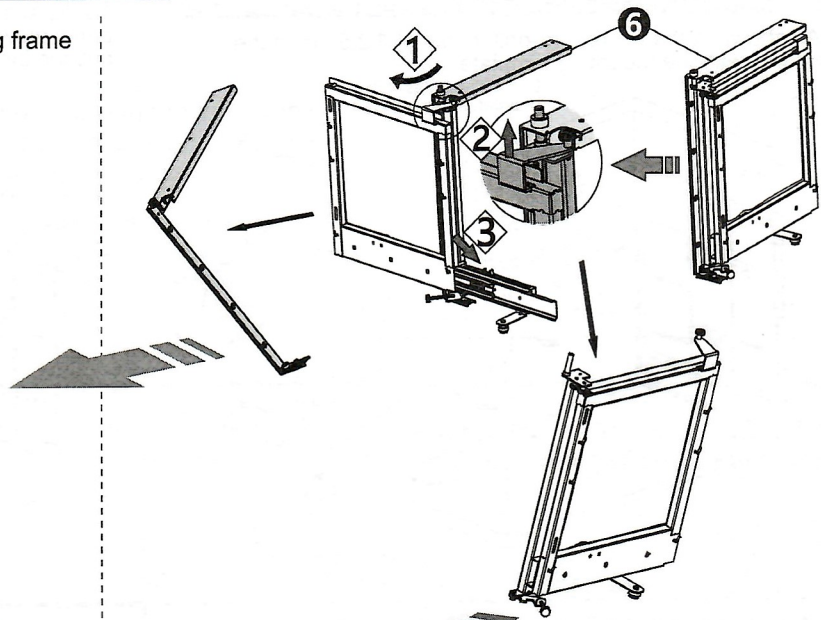
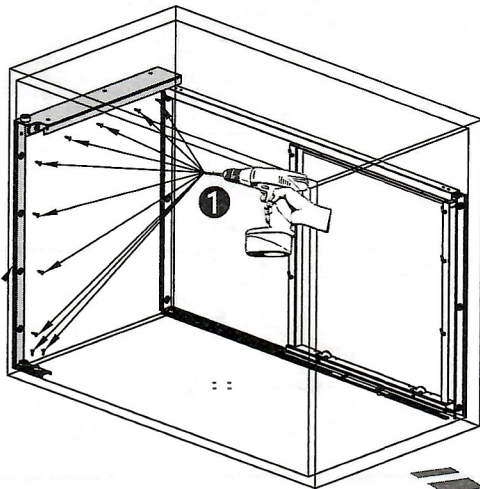
Keep the screws loose after assembly



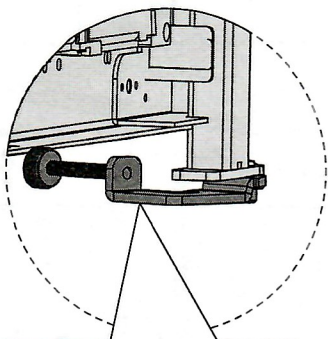
Tighten the screws after fixing the back frame

Step 3: Install the side frame

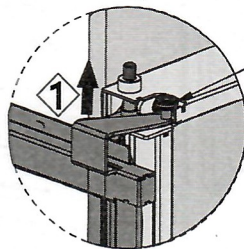
As shown in the figure, install the back sliding frame component into the cabinet.



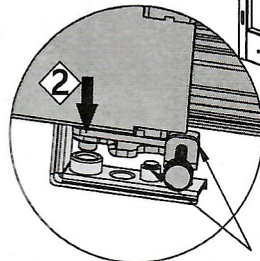
Install the side frame component



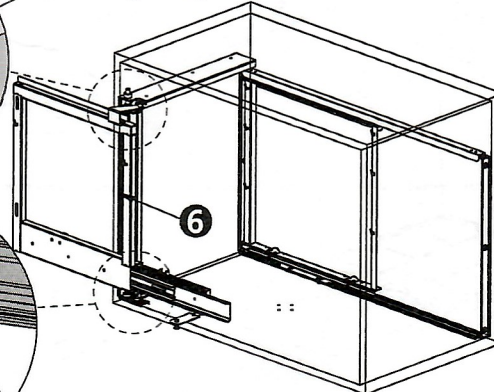
Tip: before installing, turn the adjusting screw to the outermost side first, with the adjuster to the innermost side



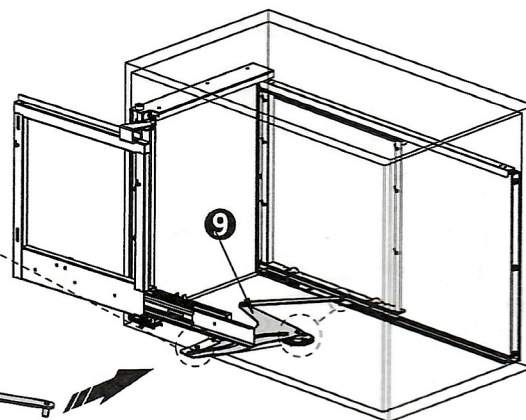
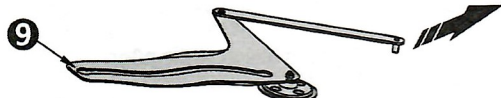
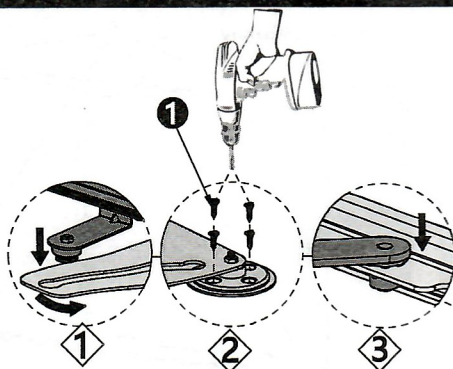
The pulley should be aligned with the guide groove



The adjuster is behind the banking pin



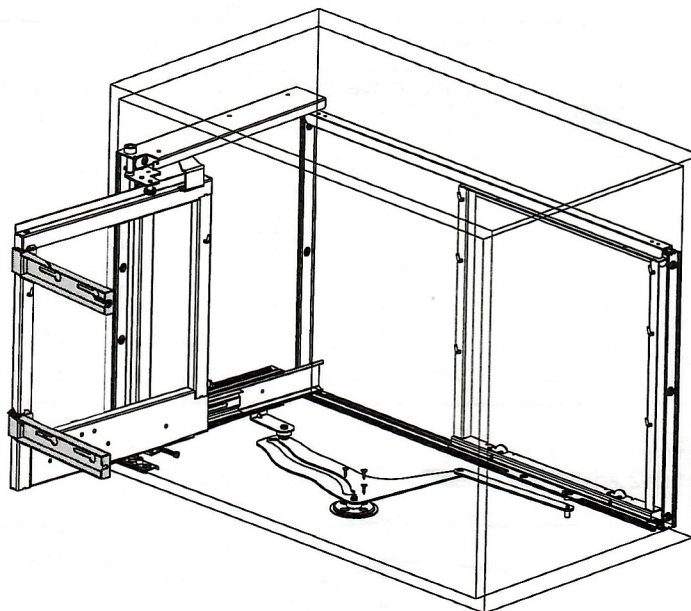
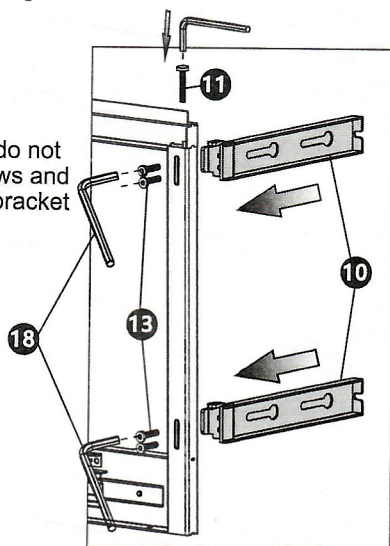
Step 4: Install the bottom rotating part



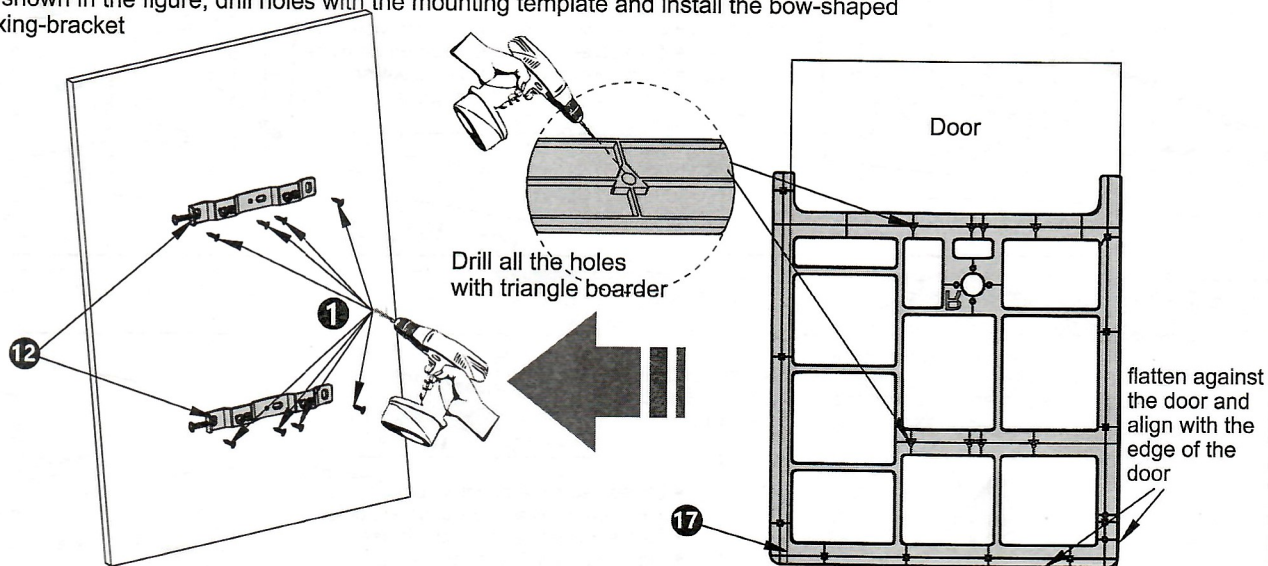
Step 5: Install the door fixing-bracket

5.1 As shown in the figure, install the top and bottom U-shaped fixing-bracket

Tip:
After installing, do not
tighten the screws and
keep the fixing bracket
active

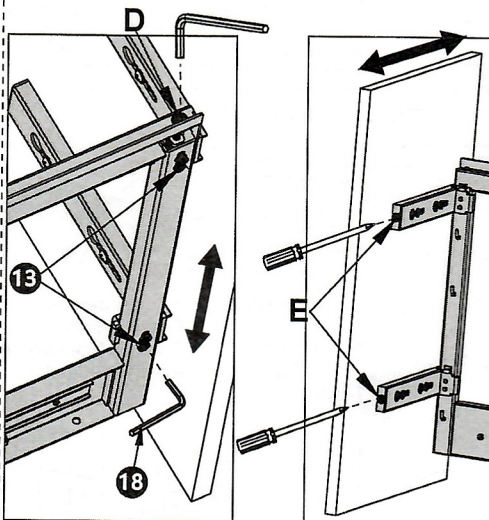
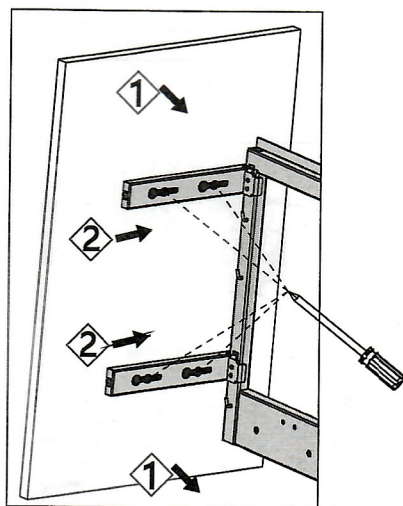


5.2 As shown in the figure, drill holes with the mounting template and install the bow-shaped door fixing-bracket

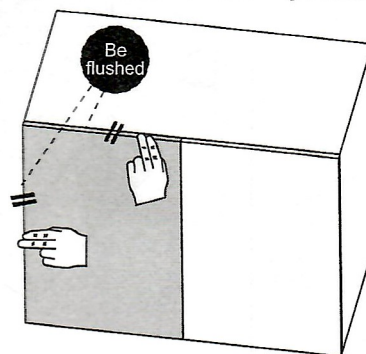


5.3 Install the door as shown in the figure

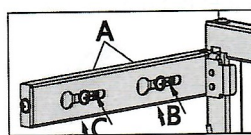
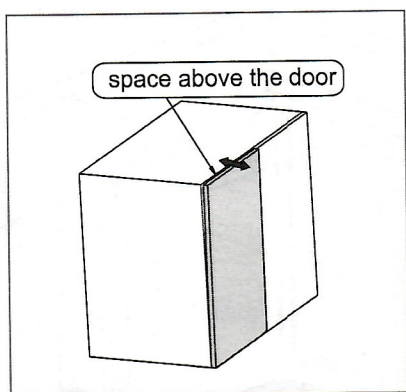
5.4 Adjust the door to be flushed with the cabinet



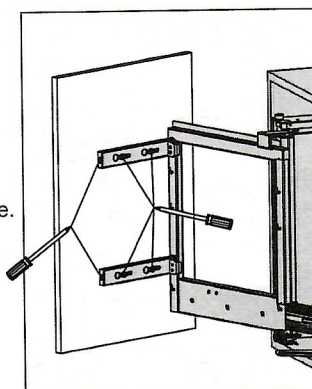
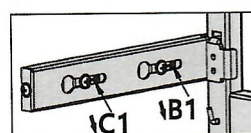
Screw D for up and down adjustment
of the door.
Screw E for left and right adjustment
of the door.
Tighten the screw 13 after adjustment.



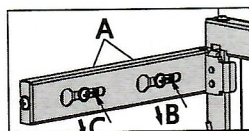
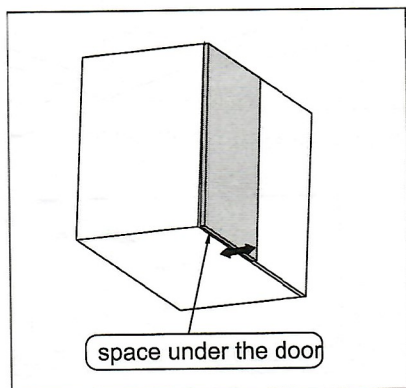
5.5-1 Adjustment when there is space above the door



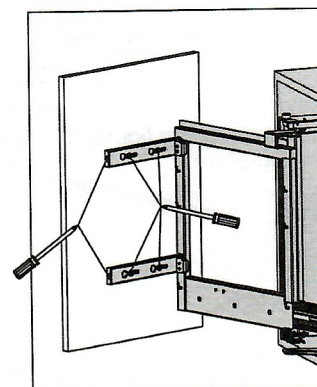
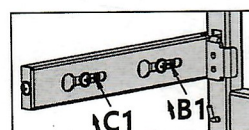
- Loosen screw A counterclockwise.
- Turn screws B and C clockwise.
- Turn screws B1 and C1 counterclockwise.
- Tighten screw A after adjusting.



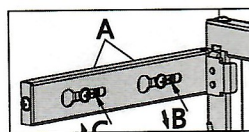
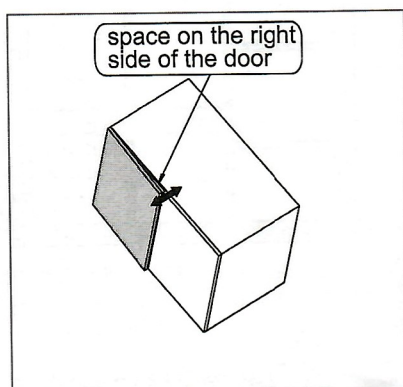
5.5-2 Adjustment when there is space under the door



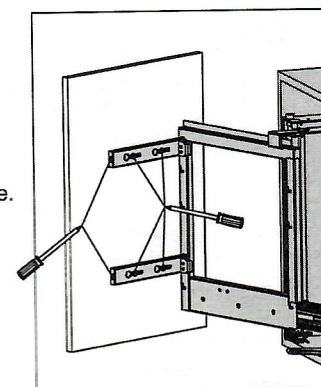
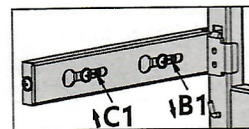
- Loosen screw A counterclockwise.
- Turn screws B and C counterclockwise.
- Turn screws B1 and C1 clockwise.
- Tighten screw A after adjusting.



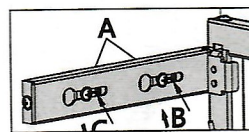
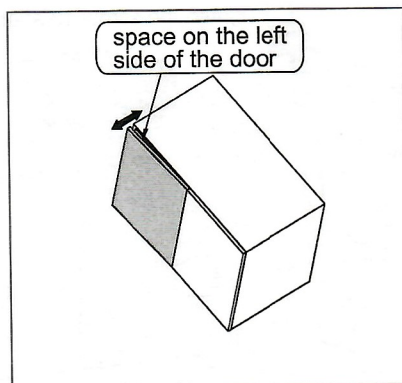
5.5-3 Adjustment when there is space on the right side of the door



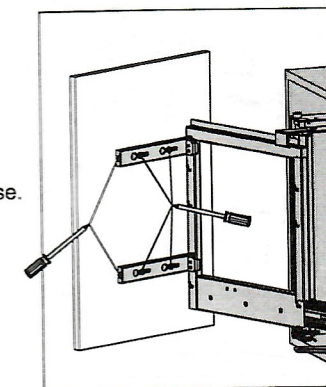
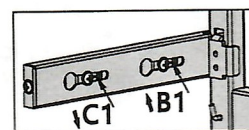
- Loosen screw A counterclockwise.
- Turn screws B and B1 counterclockwise.
- Turn screws C and C1 clockwise.
- Tighten screw A after adjusting.



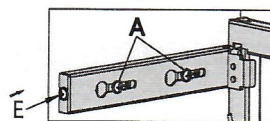
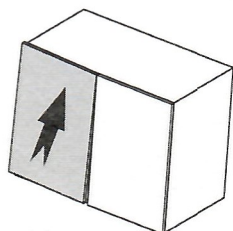
5.5-4 Adjustment when there is space on the left side of the door



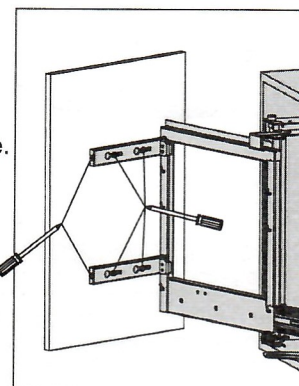
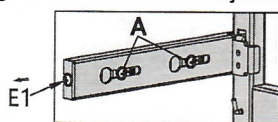
- Loosen screw A counterclockwise.
- Turn screws C and C1 counterclockwise.
- Turn screws B and B1 clockwise.
- Tighten screw A after adjusting.



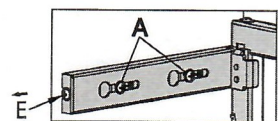
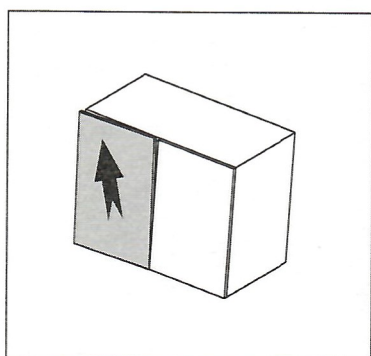
5.5-5 Adjustment when the door panel tilts to the right



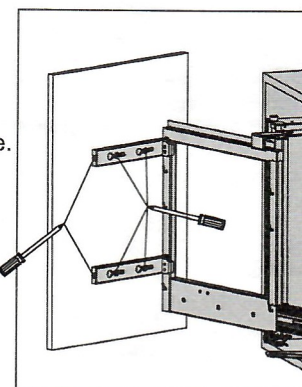
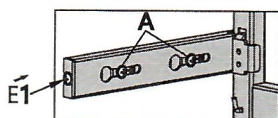
- Loosen screw A counterclockwise.
- Turn screw E1 counterclockwise.
- Turn screw E clockwise.
- Tighten screw A after adjusting.



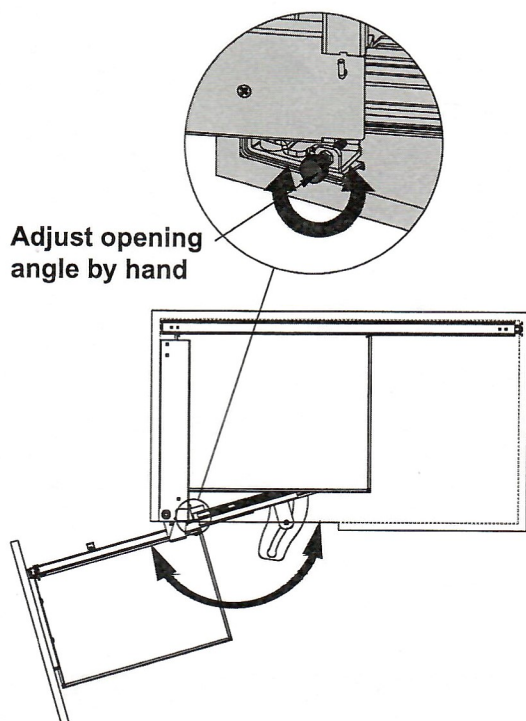
5.5-6 Adjustment when the door panel tilts to the left



- Loosen screw A counterclockwise.
- Turn screw E counterclockwise.
- Turn screw E1 clockwise.
- Tighten screw A after adjusting.



5.6 Adjustment of opening angle



Step 6: Install baskets and cover caps

6.1 Hang the baskets on the frame, install the notch cover cap and door fixing-bracket cover caps, and complete the installation.
(Same method for other styles of baskets)

